

## Master-Clip PTFE H-EL

Suction & Blower hose for corrosive media up to +175°C , electro conductive



### Material

clip profile spiral: hot-dip galvanised steel band  
wall: inner PTFE foil, electroconductive, outer layer:  
HYPALON®-coated polyester fabric

### Applications

- danger zones, which require electrically conductive hoses
- suction and conveyance of aggressive media, explosive gases and fumes
- paint, wood and paper industry
- solvent extraction
- pharmaceutical industry
- low pressure range
- chemicals industry

### Available on request

- available on request in other lengths, sizes, with stainless steel spiral.

### Properties

- excellent chemical resistance
- outer helix protects against abrasion
- PTFE-foil: surface resistance  $R_o < 10^6$  Ohm
- approved acc. to TRGS 727 and ATEX 2014/34 EU.  
Details acc. to certificate
- vibration-proof
- cold and heat resistant
- super lightweight
- high tension-proof connection of wall-lining and spiral via special clamp mechanism
- highly flexible
- smallest bending radii
- extremely compressible to approx. 1:4
- UV/ozone-proof
- weather-proof
- anti-adhesive internal wall lining material
- optimum medium flow characteristics

### Temperature Range

- -40°C to +175°C
- peaks to +190°C

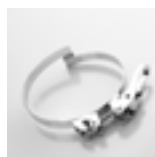
## Master-Clip PTFE H-EL

| DN  | op. pressure<br>c. bar | vacuum c.<br>mmWG | bend radius c.<br>mm | weight c.<br>kg/m | article no. | standard<br>length |  |
|-----|------------------------|-------------------|----------------------|-------------------|-------------|--------------------|--|
| 50  | 0,90                   | 4400              | 30                   | 0,50              | 261-050-    | 3-10m              |  |
| 55  | 0,85                   | 3630              | 33                   | 0,50              | 261-055-    | 3-10m              |  |
| 60  | 0,78                   | 3060              | 36                   | 0,60              | 261-060-    | 3-10m              |  |
| 65  | 0,68                   | 2610              | 39                   | 0,70              | 261-065-    | 3-10m              |  |
| 70  | 0,67                   | 2250              | 42                   | 0,70              | 261-070-    | 3-10m              |  |
| 75  | 0,62                   | 1960              | 45                   | 0,80              | 261-075-    | 3-10m              |  |
| 80  | 0,61                   | 1720              | 48                   | 0,80              | 261-080-    | 3-10m              |  |
| 90  | 0,56                   | 1360              | 54                   | 0,90              | 261-090-    | 3-10m              |  |
| 100 | 0,51                   | 1100              | 60                   | 1,00              | 261-100-    | 3-10m              |  |
| 110 | 0,48                   | 920               | 66                   | 1,10              | 261-110-    | 3-10m              |  |
| 120 | 0,36                   | 770               | 72                   | 1,10              | 261-120-    | 3-10m              |  |
| 125 | 0,33                   | 710               | 75                   | 1,20              | 261-125-    | 3-10m              |  |
| 130 | 0,28                   | 650               | 78                   | 1,20              | 261-130-    | 3-10m              |  |
| 140 | 0,25                   | 570               | 84                   | 1,30              | 261-140-    | 3-10m              |  |
| 150 | 0,22                   | 490               | 90                   | 1,30              | 261-150-    | 3-10m              |  |
| 160 | 0,21                   | 430               | 96                   | 1,30              | 261-160-    | 3-10m              |  |
| 170 | 0,19                   | 390               | 102                  | 1,40              | 261-170-    | 3-10m              |  |
| 175 | 0,19                   | 370               | 105                  | 1,40              | 261-175-    | 3-10m              |  |
| 180 | 0,17                   | 350               | 108                  | 1,40              | 261-180-    | 3-10m              |  |
| 200 | 0,15                   | 280               | 120                  | 1,60              | 261-200-    | 3-10m              |  |
| 215 | 0,13                   | 250               | 151                  | 1,80              | 261-215-    | 3-10m              |  |
| 225 | 0,12                   | 220               | 158                  | 2,00              | 261-225-    | 3-10m              |  |
| 250 | 0,10                   | 180               | 175                  | 2,10              | 261-250-    | 3-10m              |  |
| 275 | 0,08                   | 150               | 193                  | 2,30              | 261-275-    | 3-10m              |  |
| 300 | 0,07                   | 130               | 210                  | 2,40              | 261-300-    | 3-10m              |  |
| 315 | 0,06                   | 110               | 221                  | 2,60              | 261-315-    | 3-10m              |  |
| 325 | 0,06                   | 105               | 228                  | 2,80              | 261-325-    | 3-10m              |  |
| 350 | 0,06                   | 90                | 245                  | 3,30              | 261-350-    | 3-10m              |  |
| 375 | 0,05                   | 80                | 263                  | 3,50              | 261-375-    | 3-10m              |  |
| 400 | 0,05                   | 70                | 280                  | 3,80              | 261-400-    | 3-10m              |  |
| 450 | 0,04                   | 55                | 360                  | 4,20              | 261-450-    | 3-10m              |  |
| 500 | 0,04                   | 45                | 400                  | 4,70              | 261-500-    | 3-10m              |  |
| 550 | 0,04                   | 40                | 440                  | 5,30              | 261-550-    | /                  |  |
| 600 | 0,04                   | 33                | 480                  | 5,90              | 261-600-    | /                  |  |
| 700 | 0,03                   | 22                | 560                  | 6,90              | 261-700-    | /                  |  |
| 800 | 0,02                   | 18                | 640                  | 7,60              | 261-800-    | /                  |  |
| 900 | 0,01                   | 14                | 720                  | 8,20              | 261-900-    | /                  |  |

All data refers to an ambient temperature of +20 °C  
 Standard production lengths as shown, / = on request.  
 Available on request in other lengths, sizes, with stainless steel spiral.  
 Subject to technical changes and colour deviations.



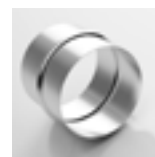
Hose Reducer,  
symmetrical



Clip-Grip quick action  
clamp



Clip-Grip Hose clamp,  
screwable



Hose Connector