

Master-Clip VINYL EL

Suction & Blower hose made from PVC coated polyester fabric, electroconductive



Material

clip profile spiral: hot-dip galvanised steel band
wall: PVC-coated polyester fabric, electrically
conductive <math>< 10^6</math> Ohm

Applications

- danger zones, which requires electro-conductivity
acc. to TRGS
- suction and conveyance of aggressive media,
explosive gases and fumes
- air supply and extraction in explosion-protected areas
- for greater mechanical demands
- low pressure range
- extractor units

Available on request

- available on request in other lengths, sizes, with
stainless steel spiral.

Properties

- outer helix protects against abrasion
- surface resistance <math>< 10^6</math> Ohm
- approved acc. to TRGS 727 and ATEX 2014/34 EU.
Details acc. to certificate
- vibration-proof
- robust wall material
- withstands high mechanical loads
- high tension-proof connection of wall-lining and
spiral via special clamp mechanism
- extremely compressable to approx. 1:6
- highly flexible
- smallest bending radii
- extremely lightweight

Temperature Range

- -20°C to +70°C
- peaks to +80°C

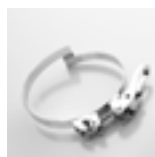
Master-Clip VINYL EL

DN	op. pressure c. bar	vacuum c. mmWG	bend radius c. mm	weight c. kg/m	article no.	standard length	
50	0,90	3200	30	0,55	260-050-1000	10m	
55	0,85	2650	33	0,60	260-055-1000	10m	
60	0,78	2220	36	0,64	260-060-1000	10m	
65	0,68	1900	39	0,69	260-065-1000	10m	
70	0,67	1600	42	0,74	260-070-1000	10m	
75	0,62	1400	45	0,79	260-075-1000	10m	
80	0,61	1250	48	0,84	260-080-1000	10m	
90	0,56	1100	54	0,94	260-090-1000	10m	
100	0,51	1000	60	0,60	260-100-1000	10m	
110	0,48	830	66	0,70	260-110-1000	10m	
120	0,36	700	72	0,70	260-120-1000	10m	
125	0,33	640	75	0,80	260-125-1000	10m	
130	0,28	590	78	0,80	260-130-1000	10m	
140	0,25	510	84	0,80	260-140-1000	10m	
150	0,22	440	90	0,90	260-150-1000	10m	
160	0,21	390	96	0,90	260-160-1000	10m	
170	0,19	350	102	0,90	260-170-1000	10m	
175	0,19	330	105	1,00	260-175-1000	10m	
180	0,17	310	108	1,00	260-180-1000	10m	
200	0,15	250	120	1,20	260-200-1000	10m	
215	0,13	220	151	1,30	260-215-1000	10m	
225	0,12	200	158	1,40	260-225-1000	10m	
250	0,10	160	175	1,60	260-250-1000	10m	
275	0,08	130	193	1,90	260-275-1000	10m	
300	0,07	110	210	2,10	260-300-1000	10m	
315	0,06	100	221	2,10	260-315-1000	10m	
325	0,06	95	228	2,20	260-325-1000	10m	
350	0,06	80	245	2,50	260-350-1000	10m	
375	0,05	70	263	2,90	260-375-1000	10m	
400	0,05	63	280	3,10	260-400-1000	10m	
450	0,05	50	360	3,60	260-450-1000	10m	
500	0,04	40	400	4,10	260-500-1000	10m	
550	0,04	33	440	4,60	260-550-	/	
600	0,04	28	480	5,10	260-600-	/	
700	0,03	20	560	6,00	260-700-	/	
800	0,02	16	640	6,90	260-800-	/	
900	0,01	12	720	7,80	260-900-	/	

All data refers to an ambient temperature of +20 °C
 Standard production lengths as shown, / = on request.
 Available on request in other lengths, sizes, with stainless steel spiral.
 Subject to technical changes and colour deviations.



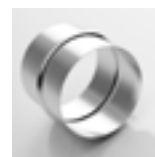
Hose Reducer,
symmetrical



Clip-Grip quick action
clamp



Clip-Grip Hose clamp,
screwable



Hose Connector