

Cargoflex

PU Suction hose & Transport hose, extremely abrasion and vacuum resistant

Material

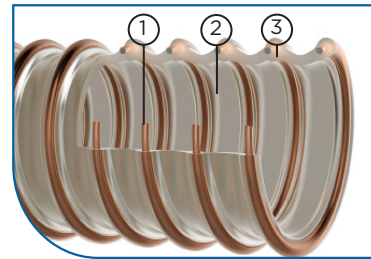
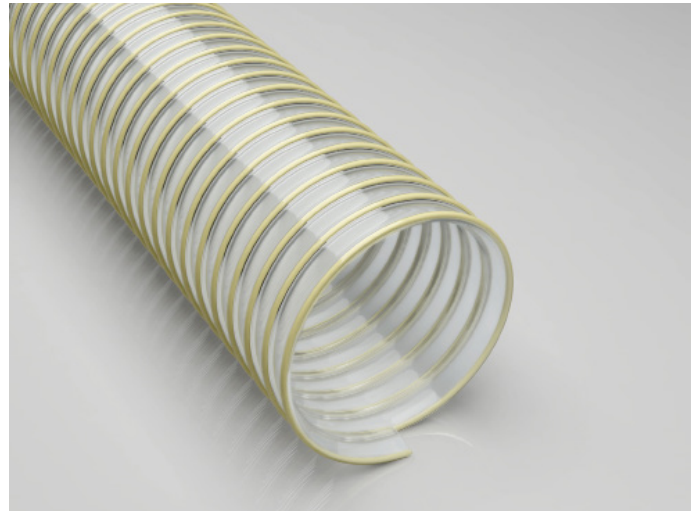
- 1 spiral: spring steel wire
- 2 wall: pure polyester polyurethane (acc. to DIN ISO 4649 more abrasion-resistant in comparison to polyether polyurethane)
- 3 wall thickness between spirals approx. 3.2 - 4.8 mm depending on DN

Applications

- suction/extraction of glass splinters, glass wool, mineral wool, slag, mill scale and sinter
- suction & transport hose for quarries, cement works, shipyards and docks
- for highest standards of abrasion resistance and durability
- refurbishment of rail systems
- transport of gravel and rocks
- suction & transport hose for the most extreme fields of application
- transport hose for handling and conveying plants
- protective hose against mechanical wear

Properties

- extremely abrasion resistant, extra strong PU lining
- microbe-resistant
- extra heavyweight
- flexible
- excellent vacuum-resistance and good pressure-resistance
- highly durable, long service lives
- halogen and plasticizer-free
- high tensile strength
- generally good UV and ozone resistance



Temperature Range

- -40°C to +90°C
- peaks to +125°C

DN	op. pressure	vacuum	bend radius	outer Ø	weight/m	old article no.	new article no.	standard length	max. production length
mm	bar	bar	mm	mm	kg			m	m
100*	3.17	0.87	298	115	3.02	115-100-x	000183-100-x	10	20
102	3.15	0.87	300	117	3.04	115-102-x	000183-102-x	10	20
125*	2.6	0.87	369	141	3.69	115-125-x	000183-125-x	10	20
127	2.55	0.87	375	143	3.75	115-127-x	000183-127-x	10	20
150*	2.27	0.82	444	166	4.39	115-150-x	000183-150-x	10	20
152	2.25	0.82	450	168	4.45	115-152-x	000183-152-x	10	20
200*	1.69	0.67	591	218	8.05	115-200-x	000183-200-x	10	10
203	1.65	0.66	600	222	8.28	115-203-x	000183-203-x	10	10
250*	1.37	0.52	738	270	10.2	115-250-x	000183-250-x	10	10
254	1.35	0.51	750	275	10.36	115-254-x	000183-254-x	10	10

All data refers to a medium and ambient temperature of +20 °C.

* Available on request

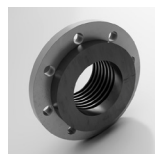
Subject to technical changes and colour deviations.



Combiflex PU Fixed Flange, pre-fixed



Combiflex PU Threaded Socket, pre-fixed



Combiflex PU Swivel Flange, pre-fixed



Combiflex PU Cone Flange, pre-fixed



Hose Clamp with Bolts