

# Master-Clip ISO-SILICON

Medium and high temperature hose up to +300°C, two layers

## Material

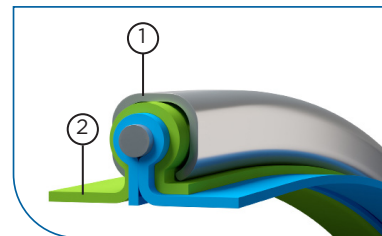
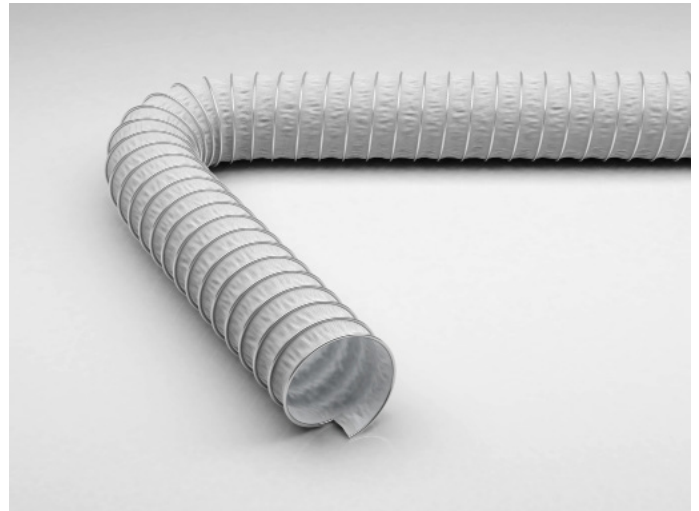
- 1 clip profile spiral: hot-dip galvanised steel band
- 2 wall: two layers
  - inner layer: heat resistant impregnated glass fabric
  - outer layer: Silicon coated glass fabric

## Applications

- engine manufacturing
- hot and cold air conveyance
- extractor units with greater suction performance
- machine manufacturing
- automotive manufacturing
- low pressure range
- defence systems
- aircraft manufacturing

## Properties

- hardly inflammable
- outer chafing protection spiral
- good temperature resistance
- limited vibration-proof
- extremely compressible to approx. 1:4
- super lightweight
- smallest bending radius
- high tension-proof connection of wall-lining and spiral via special clamp mechanism
- UV/ozone-proof



## Temperature Range

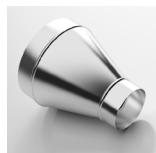
- -60°C to +300°C
- peaks to +350°C\*

DN	op. pressure		vacuum	bend radius	weight/m	old article no.	new article no.	standard length	max. production length
	bar	bar							
50	0.85	0.38	30	0.5	224-050-x	000293-50-x	10	10	
55	0.78	0.31	33	0.5	224-055-x	000293-55-x	10	10	
60	0.68	0.26	36	0.6	224-060-x	000293-60-x	10	10	
65	0.59	0.22	39	0.6	224-065-x	000293-65-x	10	10	
70	0.53	0.19	42	0.6	224-070-x	000293-70-x	10	10	
75	0.47	0.17	45	0.7	224-075-x	000293-75-x	10	15	
80	0.43	0.15	48	0.7	224-080-x	000293-80-x	10	15	
90	0.355	0.12	54	0.7	224-090-x	000293-90-x	10	15	
100	0.3	0.09	60	0.7	224-100-x	000293-100-x	10	15	
110	0.258	0.08	66	0.8	224-110-x	000293-110-x	10	15	
120	0.224	0.07	72	0.8	224-120-x	000293-120-x	10	15	
125	0.21	0.06	75	0.9	224-125-x	000293-125-x	10	15	
130	0.197	0.06	78	0.9	224-130-x	000293-130-x	10	15	
140	0.175	0.05	84	0.9	224-140-x	000293-140-x	10	15	
150	0.157	0.04	90	1	224-150-x	000293-150-x	10	15	
160	0.14	0.04	96	1	224-160-x	000293-160-x	10	15	
170	0.128	0.03	102	1	224-170-x	000293-170-x	10	15	
175	0.123	0.03	105	1.1	224-175-x	000293-175-x	10	15	
180	0.117	0.03	108	1.1	224-180-x	000293-180-x	10	15	
200	0.099	0.02	120	1.3	224-200-x	000293-200-x	10	15	
215	0.088	0.02	151	1.4	224-215-x	000293-215-x	10	15	
225	0.082	0.02	158	1.6	224-225-x	000293-225-x	10	15	
250	0.069	0.02	175	1.8	224-250-x	000293-250-x	10	15	
275	0.059	0.01	193	2.1	224-275-x	000293-275-x	10	15	
300	0.052	0.01	210	2.3	224-300-x	000293-300-x	10	15	
315	0.048	0.01	221	2.3	224-315-x	000293-315-x	10	10	
325	0.046	0.01	228	2.4	224-325-x	000293-325-x	10	10	
350	0.04	0.01	245	2.8	224-350-x	000293-350-x	10	10	
375	0.036	0.01	263	3.2	224-375-x	000293-375-x	10	10	
400	0.033	0.01	280	3.4	224-400-x	000293-400-x	10	10	
450	0.027	0.01	360	4	224-450-x	000293-450-x	10	10	
500	0.023	0.01	400	4.5	224-500-x	000293-500-x	10	10	
550	0.02	0.01	440	5.1	224-550-x	000293-550-x	6	6	
600	0.017	0.01	480	5.6	224-600-x	000293-600-x	6	6	
700	0.014	0.01	560	6.6	224-700-x	000293-700-x	6	6	
800	0.011	0.01	640	7.6	224-800-x	000293-800-x	6	6	
900	0.009	0.01	720	8.6	224-900-x	000293-900-x	6	6	

All data refers to a medium and ambient temperature of +20 °C.

\* Available on request

Subject to technical changes and colour deviations.



Hose Reducer, symmetrical



Clip-Grip quick action clamp



Clip-Grip Hose clamp, screwable



Hose Connector