

PRODUCT GUIDE

Technical Hoses & Connection Systems

Masterflex Technical Hoses Ltd.
Prince of Wales Business Park
Vulcan Street
Oldham, OL1 4ER, Lancs.
UK
Tel +44 161 62680-66
Fax +44 161 62690-66
www.masterflex-uk.com
info@masterflex-uk.com
A MASTERFLEX GROUP COMPANY

 **MASTERFLEX**
Connecting Values

Abrasion-Resistant Suction & Transport Hoses made from PU / Hardlly inflammable Hoses

Master PU L-F



PU Film Hose
lightweight
highly flexible
and
compressible

Applications

- protective hose against mechanical wear
- transport hose for abrasive dusts wood processing machines
- shavings extractions in wood processing

Available sizes
DN 38 - DN 406

Wall Thickness
0.4 mm approx.

Temperature Range
-40°C to +90°C
peaks to +125°C

Flamex B-F se



PU Film Hose
highly flexible
and
compressible
hardly inflammable
acc. to DIN
4102 B1

Applications

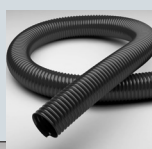
- protective hose against mechanical wear
- hardly inflammable (acc. to DIN 4102 B1) transport hose for abrasive solids
- wood processing machines
- shavings extractions in wood processing

Available sizes
DN 38 - DN 406

Wall Thickness
0.5 mm approx.

Temperature Range
-40°C to +90°C
peaks to +125°C

Flamex B-F Black



PU Film Hose
medium duty
highly flexible
and
compressible

Applications

- transport hose for abrasive solids wood processing machines
- shavings extractions in wood processing
- protective hose against mechanical wear

Available sizes
DN 38 - DN 200

Wall Thickness
0.5 mm approx.

Temperature Range
-40°C to +90°C
peaks to +125°C

Flamex B-F M



PU Suction &
Transport Hose
medium duty

Applications

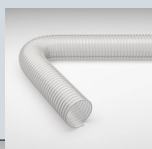
- protective hose against mechanical wear
- transport hose for abrasive solids
- woodworking machines
- extraction of sawdust and wood-chips
- also suitable for dust, fumes and powder applications

Available sizes
DN 38 - DN 406

Wall Thickness
0.5 mm approx.

Temperature Range
-40°C to +90°C
peaks to +125°C

Flamex B-F H



PU Film Hose
medium/heavy
duty

Applications

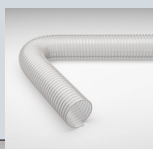
- transport hose for abrasive solids
- wood processing machines
- shavings extractions in wood processing
- protective hose against mechanical wear

Available sizes
DN 102 - DN 305

Wall Thickness
0.7 mm approx.

Temperature Range
-40°C to +90°C
peaks to +125°C

Flamex B-F HS



PU film hose
heavy duty hardly
inflammable

Applications

- protective hose against mechanical wear
- transport hose for abrasive solids
- woodworking machines
- extraction of sawdust and wood-chips
- also suitable for dust, fumes and powder applications

Available sizes
DN 305 and DN 406

Wall Thickness
1.4 mm approx.

Temperature Range
-40°C to +90°C
peaks to +125°C

Master-PUR L Trivolution



PU hose light
duty antistatic
microbe
resistant hardly
inflammable acc.
to DIN 4102 B1

Applications

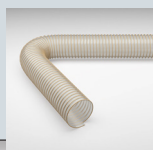
- suction/extraction of paper and textile fibres
- granulate transport hose
- transport of fine-grained particles, such as dust and powder
- suction & transport hose for abrasive solids, liquids and gases

Available sizes
DN 25 - DN 500

Wall Thickness
0.7 mm approx.

Temperature Range
-40°C to +90°C
peaks to +125°C

Master-PUR H Trivolution



PU Hose
flexible antistatic
microbe resistant
hardly inflammable
acc. to DIN
4102 B1

Applications

- suction of coarse-grained media with high flow rate
- granulate transport hose for abrasive solids, gaseous and liquid media
- standard hose for industrial vacuum cleaners
- transport of chips/shavings
- oil mist extraction/suction

Available sizes
DN 25 - DN 500

Wall Thickness
1.4 mm approx.

Temperature Range
-40°C to +90°C
peaks to +125°C

Master-PUR HX Trivolution



PU hose highly
abrasion resistant
antistatic
microbe resistant
hardly inflammable
acc. to DIN
4102 B1

Applications

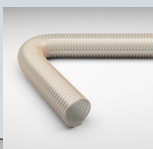
- for increased requirements of abrasion resistance and durability
- transport hose for problematic media, e.g. sand, gravel, grain, granules

Available sizes
DN 32 - DN 300

Wall Thickness
approx. 1.7 - 2.1 mm,
depending on DN

Temperature Range
-40°C to +90°C
peaks to +125°C

Master-PUR Performance



PU Hose
extremely
abrasion-resistant
seamless
smooth inner
lining, antistatic
and microbe
resistant

Applications

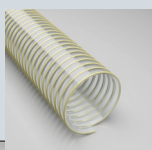
- transport hose for extremely abrasive media, e.g. sand, gravel, grain, granules
- transport hose for feeding and cleaning of glass works, mineral processing plants, steelworks, quarries, shipyards and docks, cement works, flat roof gravelling

Available sizes
DN 38 - DN 200

Wall Thickness
min. 2.5 mm

Temperature Range
-40°C to +90°C
peaks to +125°C

Cargoflex



PU hose
extremely
abrasion and
vacuum
resistant

Applications

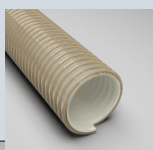
- suction/extraction of glass splinters, glass wool, mineral wool, slag, mill scale and sinter
- for highest standards of abrasion resistance and durability
- transport hose for handling and conveying plants
- protective hose against mechanical wear

Available sizes
DN 100 - DN 254

Wall Thickness
approx. 3.2 - 4.8 mm
depending on DN

Temperature Range
-40°C to +90°C
peaks to +125°C

Master-PUR Inline



PU Hose
extremely
abrasion resistant
vacuum proof
seamless very
smooth inner
lining, antistatic,
microbe-resistant

Applications

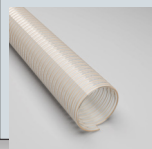
- special hose for transport of extremely abrasive media
- transport hose for problematic media, e.g. sand, gravel, grain
- transport hose for feeding and cleaning of glass works, mineral processing plants, steelworks, quarries, shipyards and docks, cement works

Available sizes
DN 38 - DN 254

Wall Thickness
5.5 mm

Temperature Range
-40°C to +90°C
peaks to +125°C

Polderflex PUR



PU Hose
extremely
pressure and
vacuum
resistant smooth
inner and outer
linings

Applications

- suction/extraction of glass splinters, glass wool, mineral wool, slag, mill scale and sinter
- suction & transport hose for quarries, cement works, shipyards and docks
- transport hose for handling and conveying plants

Available sizes:
DN 32 - DN 254

Wall Thickness:
3-5 mm depending
on DN

Temperature Range
-40°C to +90°C
peaks to +125°C

Master-PUR STEP



PU Film Hose
crush-resistant
hardly inflammable
acc. to
DIN 4102 B1

Applications

- ideal as suction hose for floor-level areas where conventional hoses are subjected to rough conditions and can be permanently deformed
- wood processing
- suction & transport hose for abrasive solids, liquids and gases

Available sizes
DN 40 - DN 400

Wall Thickness
0.5 mm approx.

Temperature Range
-40°C to +90°C
peaks to +125°C

Suction & Transport Hoses made from PVC/EVA

Master-PVC Flex



PVC Suction &
Transport Hose
light highly flex-
ible reinforced

Applications

- transport of fine-grained particles, such as dust and powder
- liquid/fluid drainage
- ventilation and air-conditioning systems
- dust removal
- apparatus construction
- spinning fibre extraction

Available sizes
DN 25 - DN 254

Temperature Range
0°C to +70°C

Master-VAC



PE-EVA
Suction Hose &
Transport Hose
lightweight
crush-resistant

Applications

- transport of fine-grained particles, such as dust and powder
- ventilation, swimming pool cleaning, chemicals industry
- dust removal units
- lightweight industrial vacuum cleaners
- handheld machines

Available sizes
DN 25 - DN 63

Temperature Range
-40°C to +60°C
peaks to +70°C

Master-PVC L-F L



Soft light duty PVC ducting reinforced with spring steel wire helix

Applications

- liquid drainage
- ventilation and air-conditioning systems
- dust removal
- apparatus construction
- spinning fibre extraction
- transport of fine-grained particles, such as dust and powder

Available sizes
DN 25 - DN 152

Wall Thickness
0.35 mm approx.

Temperature Range
0°C to +70°C

Master-PVC L-F M



PVC Suction & Transport hose light duty highly flexible

Applications

- liquid drainage
- ventilation and air-conditioning systems
- dust removal
- apparatus construction
- spinning fibre extraction
- transport of fine-grained particles, such as dust and powder

Available sizes
DN 25 - DN 152

Wall Thickness
0.55 mm approx.

Temperature Range
0°C to +70°C

Microbe & Hydrolysis-Resistant Hoses

Master-PUR L-MHR



PU Suction & Transport Hose light weight microbe & hydrolysis resistant

Applications

- suction/extraction of paper and textile fibres
- suction & transport hose for abrasive solids, for which microbe and hydrolysis resistance is required
- transport of fine-grained particles, such as dust and powder
- oil mist extraction/suction

Available sizes
DN 25 - DN 500

Wall Thickness
0.7 mm approx.

Temperature Range
-40°C to +90°C
peaks to +125°C

Master-PUR H-MHR



PU Suction & Transport Hose, medium/heavy duty microbe hydrolysis resistant

Applications

- suction & transport hose for abrasive solids, for which microbe and hydrolysis resistance is required
- granulate transport hose standard hose for industrial vacuum cleaners
- transport of chips/shavings oil mist extraction/suction

Available sizes
DN 25 - DN 500

Wall Thickness
1.4 mm approx.

Temperature Range
-40°C to +90°C
peaks to +125°C

Streetmaster L-F



PU suction hose for streetcleaning machines Abrasion vacuum & microbe resistant

Applications

- Suction and wander hose for street cleaning machines and precinct sweeping machines
- Leaf collecting
- Grass cutting machines

Available sizes
DN 100 - DN 300

Wall Thickness
0.7 mm approx.

Temperature Range
-20°C to +90°C
peaks to +125°C

Streetmaster GKS



PU Large Street-Cleaner Suction Hose highly abrasion vacuum microbe resistant

Applications

- suction & transport hose for abrasive solids, for which microbe and hydrolysis resistance is required
- granulate transport hose standard hose for street cleaner
- transport of chips/shavings oil mist extraction/suction

Available sizes
DN 225 - DN 280

Wall Thickness
approx. 1.8-3.4 mm

Temperature Range
-40°C to +90°C
peaks to +125°C

Food & Pharmaceutical Hoses

Master-PUR L-F Food



PU Hose lightweight extremely flexible food-grade quality acc. to EU 10/2011 and FDA

Applications

- pharmaceutical industry
- chemicals industry
- food industry
- suction & transport hose for abrasive solids and liquids, for which microbe and hydrolysis resistance is required

Available sizes
DN 40 - DN 400

Wall Thickness
0.5 mm approx.

Temperature Range
-40°C to +90°C
peaks to +125°C

Master-PUR L-F Food A



PU Hose lightweight food-grade quality acc. to EU 10/2011 and FDA permanently antistatic

Applications

- pharmaceutical industry
- chemicals industry
- food industry
- suction & transport hose for abrasive solids and liquids, for which microbe and hydrolysis resistance is required

Available sizes
DN 40 - DN 400

Wall Thickness
0.5 mm approx.

Temperature Range
-40°C to +90°C
peaks to +125°C

Flamex BF AE



PU Hose lightweight extremely flexible, food-grade quality acc. to FDA

Applications

- pharmaceutical industry
- chemicals industry
- food industry
- suction & transport hose for abrasive solids and liquids, for which microbe and hydrolysis resistance is required

Available sizes
DN 75 - DN 250

Wall Thickness
0.5 mm approx.

Temperature Range
-40°C to +90°C
peaks to +125°C

Master-PUR L Food



PU Hose light duty food-grade quality acc. to EU 10/2011 and FDA

Applications

- pharmaceutical industry
- chemicals industry
- food industry
- suction & transport hose for abrasive solids and liquids, for which microbe and hydrolysis resistance is required

Available sizes
DN 32 - DN 203

Wall Thickness
0.7 mm approx.

Temperature Range
-40°C to +90°C
peaks to +125°C

Master-PUR L Food A



PU Hose light duty highly flexible food-grade quality acc. to EU 10/2011 and FDA permanently antistatic

Applications

- pharmaceutical industry
- chemicals industry
- food industry
- suction & transport hose for abrasive solids and liquids, for which microbe and hydrolysis resistance is required

Available sizes
DN 32 - DN 203

Wall Thickness
0.7 mm approx.

Temperature Range
-40°C to +90°C
peaks to +125°C

Master-PUR H Food



PU Hose medium duty very flexible food-grade quality acc. to EU 10/2011 and FDA

Applications

- pharmaceutical industry
- chemicals industry
- food industry
- suction & transport hose for abrasive solids and liquids, for which microbe and hydrolysis resistance is required

Available sizes
DN 20 - DN 203

Wall Thickness
1.4 mm approx.

Temperature Range
-40°C to +90°C
peaks to +125°C

Master-PUR H Food A



PU Hose medium duty flexible, food-grade quality acc. to EU 10/2011 and FDA permanently antistatic

Applications

- pharmaceutical industry
- chemicals industry
- food industry
- suction & transport hose for abrasive solids and liquids, for which microbe and hydrolysis resistance is required

Available sizes
DN 20 - DN 203

Wall Thickness
1.4 mm approx.

Temperature Range
-40°C to +90°C
peaks to +125°C

Master-PUR HX Food



PU Hose, heavy duty flexible food-grade quality acc. to EU 10/2011 and FDA

Applications

- pharmaceutical industry
- chemicals industry
- food industry
- suction & transport hose for abrasive solids and liquids, for which microbe and hydrolysis resistance is required

Available sizes:
DN 32 - DN 152

Wall Thickness:
approx. 1.7 - 2.1mm depending on DN

Temperature Range
-40°C to +90°C
peaks to +125°C

Master-PUR HX Food A



PU Hose, heavy duty flexible food-grade quality acc. to EU 10/2011 and FDA permanently antistatic

Applications

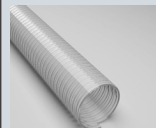
- pharmaceutical industry
- chemicals industry
- food industry
- suction & transport hose for abrasive solids and liquids, for which microbe and hydrolysis resistance is required

Available sizes
DN 32 - DN 152

Wall Thickness
approx. 1.7 - 2.1mm depending on DN

Temperature Range
-40°C to +90°C
peaks to +125°C

Polderflex PUR Food



PU Hose, extremely pressure/vacuum-proof smooth inner and outer linings food-grade quality acc. to EU 10/2011 and FDA

Applications

- pharmaceutical industry
- chemicals industry
- food industry
- suction & transport hose for abrasive solids and liquids, for which microbe and hydrolysis resistance is required

Available sizes
DN 32 - DN 152

Wall Thickness
3-5 mm depending on DN

Temperature Range
-40°C to +90°C
peaks to +125°C

**Polderflex
PUR Food A**


PU Hose extremely pressure/vacuum-proof smooth inner and outer linings food-grade quality acc. to EU 10/2011 and FDA, permanently antistatic

Applications

- pharmaceutical industry
- chemicals industry
- food industry
- suction & transport hose for abrasive solids and liquids, for which microbe and hydrolysis resistance is required

Available sizes

DN 32 - DN 152

Wall Thickness
3-5 mm depending on DN.

Temperature Range
-40°C to +90°C
peaks to +125°C

**Master-PUR
Flat L Food**


Spiral-Free PU Hose light duty food-grade quality acc. to EU 10/2011 and FDA

Applications

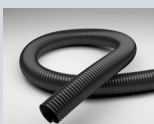
- spiral-free transport hose for abrasive solids
- solids transport for sieving machines
- conductor hose on charging station
- pharmaceutical industry
- chemicals industry
- food industry

Available sizes
DN 50 - DN 300

Wall Thickness
0.7 mm approx.

Temperature Range
-40°C to +90°C
peaks to +125°C

Antistatic & Electroconductive Hoses

Master-PUR L-F EL


PU Suction & Transport Hose light duty highly flexible electroconductive

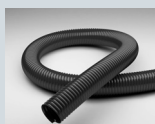
Applications

- suction/extraction in danger zones, which require electrically conductive hoses
- transport of fine-grained particles, such as dust and powder
- suction & transport hose for abrasive solids, liquids and gases
- oil mist extraction/suction

Available sizes
DN 32 - DN 152

Wall Thickness
0.5 mm approx.

Temperature Range
-40°C to +90°C
peaks to +125°C

Master-PUR L-EL


PU Suction & Transport Hose light duty highly flexible electroconductive

Applications

- suction/extraction in danger zones, which require electrically conductive hoses
- transport of fine-grained particles, such as dust and powder
- suction & transport hose for abrasive solids, liquids and gases
- oil mist extraction/suction

Available sizes
DN 25 - DN 500

Wall Thickness
0.7 mm approx.

Temperature Range
-40°C to +90°C
peaks to +125°C

Master-PUR H-EL


PU Suction & Transport Hose medium duty highly flexible electroconductive

Applications

- danger zones, which require electrically conductive hoses
- special hose for industrial vacuum cleaners in explosion protected areas
- suction & transport hose for abrasive solids, liquids and gases
- oil mist extraction/suction

Available sizes
DN 25 - DN 500

Wall Thickness
1.4 mm approx.

Temperature Range
-40°C to +90°C
peaks to +125°C

Master-PUR HX-EL


PU Suction & Transport Hose heavy duty flexible electroconductive

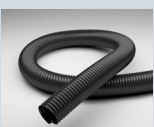
Applications

- Protective hose against mechanical wear
- Hardly inflammable (acc. to DIN 4102 B1) transport hose for abrasive solids
- Wood processing machines
- Shavings extractions in wood processing

Available sizes
DN 32 - DN 127

Wall Thickness
approx. 1.7-2.1mm depending on DN

Temperature Range
-40°C to +90°C
peaks to +125°C

Master-PVC L-F EL


PVC Film/Foil Hose lightweight electroconductive

Applications

- chemicals industry
- apparatus construction
- suction and transport hose for solid, liquid and gaseous media
- danger zones, which require electrically conductive hoses
- transport of fine-grained particles, such as dust and powder

Available sizes:
DN 50 - DN 300

Wall Thickness:
0.5 mm approx.

Temperature Range
-20°C to +70°C
peaks to +80°C

Master-VAC EL

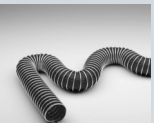

PE-EVA Suction Hose & Transport Hose lightweight crush-resistant, electroconductive

Applications

- conveyance and suction of solid, liquid and gaseous media
- chemicals industry
- dust removal units
- household vacuum cleaners
- industrial vacuum cleaners
- handheld machines

Available sizes
DN 25 - DN 50

Temperature Range
-40°C to +60°C
peaks to +70°C

Master-Clip VINYL EL


Suction & Blower hose made from PVC coated polyester fabric electroconductive

Applications

- danger zones, which requires electro-conductivity acc. to TRGS
- suction and conveyance of aggressive media, explosive gases and fumes
- air supply and extraction in explosion-protected areas
- low pressure range

Available sizes:
DN 50 - DN 900

Temperature Range
-20°C to +70°C
peaks to +80°C

Master-Clip VITON EL


Suction & Blower hose made from VITON-coated Polyester fabric for corrosive media up to +210 °C

Applications

- danger zones, which requires electro-conductivity acc. to TRGS
- paint mist extraction
- suction/extraction of aggressive media in medium temperature range
- low pressure range
- chemicals industry

Available sizes:
DN 50 - DN 900

Temperature Range
-25°C to +210°C
peaks to +240°C

Master-Clip PTFE H EL


Suction & Blower hose for corrosive media up to +175°C, electroconductive

Applications

- danger zones, which require electrically conductive hoses
- suction and conveyance of aggressive media, explosive gases and fumes
- solvent extraction
- pharmaceutical industry
- chemicals industry

Available sizes:
DN 50 - DN 900

Temperature Range
-40°C to +175°C
peaks to +190°C

Master-Clip PTFE S-EL


Suction & Blower hose for corrosive media up to +250°C

Applications

- danger zones, which require electrically conductive hoses
- suction and conveyance of aggressive media, explosive gases and fumes
- solvent extraction
- pharmaceutical industry
- chemicals industry

Available sizes:
DN 50 - DN 900

Temperature Range
-70°C to +250°C
peaks to +270°C

Air-Conditioning, Ventilation & Welding Fumes Hoses

Master-Clip VINYL



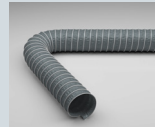
Suction & Blower Hose made from PVC foil/film

Applications
- air-conditioning and ventilation systems
- air supply and extraction
- low pressure range
- extractor units

Available sizes:
DN 50 - DN 900

Temperature Range
-20°C to +70°C
peaks to +80°C

Master-Clip VINYL B



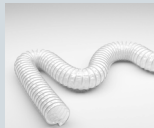
Suction & Blower Hose made from PVC-coated Polyester fabric hardly inflammable

Applications
- air-conditioning and ventilation systems
- air supply and extraction
- tent heating
- solder fume extraction
- low pressure range
- extractor units

Available sizes:
DN 50 - DN 900

Temperature Range
-20°C to +70°C
peaks to +80°C

Master-Clip PE



Suction & Blower Hose made from PE-coated PE fabric environmentally friendly

Applications
- air-conditioning and ventilation systems
- air supply and extraction
- vacuum devices for asbestos removal
- low pressure range
- extractor units

Available sizes:
DN 50 - DN 900

Temperature Range
-40°C to +85°C
peaks to +95°C

Master-Clip PUR



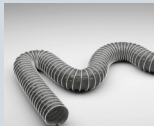
PU Film Hose very light duty highly flexible and compressible

Applications
- suction of abrasive solids
- air-conditioning and ventilation systems
- low pressure range

Available sizes:
DN 50 - DN 900

Temperature Range
-20°C to +70°C
peaks to +80°C

Master-Clip SPARK



Special hose for welding fumes extraction made from PVC-coated glass fabric

Applications
- welding fume extraction
- for greater safety requirements
- air-conditioning and ventilation systems
- air supply and extraction
- tent heating
- solder fume extraction
- low pressure range

Available sizes:
DN 50 - DN 900

Temperature Range
-20°C to +90°C
peaks to +110°C

Master-VENT 2



Suction & Blower hose made from co-polymer coated Polyester fabric

Applications
- steam extraction
- air-conditioning and ventilation systems
- extractor units, which require normal inflammable hoses
- extractors

Available sizes:
DN 51 - DN 610

Temperature Range
-30°C to +140°C

Exhaust Gas Hoses & Temperature-Resistant Hoses up to +1100 °C

Master-SANTO SL



TPV transport and suction hose, very light weight for increased temperatures

Applications
- steam extraction
- air supply and extraction in engine applications
- conveyance of hot and cold air in vehicle and machine manufacturing

Available sizes:
DN 25 - DN 350

Temperature Range
-40°C to +130°C
peaks to +150°C

Master-SANTO L F



TPV transport and suction hose, light weight, for increased temperatures

Applications
- steam extraction
- air supply and extraction in engine applications
- conveyance of hot and cold air in vehicle and machine manufacturing
- liquid and gaseous media
- low pressure range

Available sizes:
DN 26 - DN 400

Wall Thickness:
0.5 mm approx.
Temperature Range
-40°C to +130°C
peaks to +150°C

Master-NEO 1



Neoprene coated Nylon fabric Hose medium and high temperature up to +135°C

Applications
- chemicals industry
- hot air hose for granulate dryer
- machine and engine manufacturing
- plastic processing industry
- waste incineration plants
- automotive manufacturing
- aircraft manufacturing

Available sizes:
DN 13 - DN 300

Temperature Range
-35°C to +135°C
peaks -55°C to +150°C

Master-NEO 2



Neoprene coated Nylon fabric Hose medium and high temperature up to +135°C two layers

Applications
- chemicals industry
- hot air hose for granulate dryer
- machine and engine manufacturing
- plastic processing industry
- waste incineration plants
- automotive manufacturing
- aircraft manufacturing

Available sizes:
DN 13 - DN 305

Temperature Range
-35°C to +135°C
peaks -55°C to +150°C

Master-NEO 2 NR



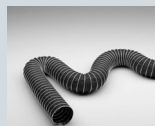
Neoprene coated Nylon fabric with nitrile rubber lining Hose for temperatures up to +135°C three layers

Applications
- hot air hose for granulate dryer
- plastic processing industry
- fuel filler hose in the motor sport industry
- extraction of dust, fume and oil mist where aq smooth bore and reduced permeability is required

Available sizes:
DN 25 - DN 76

Temperature Range
-35°C to +135°C
peaks -50°C to +150°C

Master-Clip Iso NEOPRENE



2 Ply Neoprene coated polyester fabric Hose for medium and high temperature up to +130°C

Applications
- air-conditioning and ventilation systems
- engine manufacturing
- transport of hot and cold air
- suction of aggressive media
- automotive manufacturing
- low pressure range
- exhaust gas extraction
- chemicals industry

Available sizes:
DN 76 - DN 300

Temperature Range
-35°C to +130°C
peaks to +150°C

Master-Clip NEOPRENE



Neoprene coated polyester fabric Hose for Medium and high temperature up to +125°C

Applications
- air-conditioning and ventilation systems
- engine manufacturing
- exhaust gas extraction
- suction of aggressive media
- transport of hot and cold air
- automotive manufacturing
- low pressure range
- chemicals industry

Available sizes:
DN 50 - DN 900

Temperature Range
-35°C to +125°C
peaks to +150°C

Master-Clip HYPALON



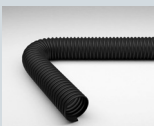
Hypalon® coated polyester fabric Hose Medium and high temperature up to +175°C

Applications
- air-conditioning and ventilation systems
- engine manufacturing
- exhaust gas extraction
- suction of aggressive media
- transport of hot and cold air
- automotive manufacturing
- low pressure range
- extractor units

Available sizes:
DN 50 - DN 900

Temperature Range
-40°C to +175°C
peaks to +190°C

Carflex Super



EPDM/PP coated polyester fabric Hose super lightweight crush-resistant for exhaust fume temperature up to +200°C

Applications
- suction of engine exhaust fumes
- medium wear during extraction of petrol and diesel engine exhaust fumes
- all conventional exhaust systems, such as: - Exhaust Hose Reel - Suction Rail System - Upper/Lower Floor Systems

Available sizes:
DN 38 - DN 203

Temperature Range
+200°C

Carflex 200



Neoprene coated polyester fabric Hose for exhaust fumes/gases up to +200°C

Applications
- suction of engine exhaust fumes
- all conventional exhaust systems, such as: - Exhaust Hose Reel - Suction Rail System - Upper/Lower Floor Systems - Stationary Systems
- light to medium wear during extraction of petrol and diesel

Available sizes:
DN 63 - DN 200

Temperature Range
+200°C

Master-Clip VITON



Viton®-coated polyester fabric Hose, for Medium and high temperature up to +210°C

Applications

- paint mist extraction
- suction/extraction of aggressive media in medium temperature range
- low pressure range
- chemicals industry

Available sizes:
DN 50 - DN 900

Temperature Range
-25°C to +210°C
peaks to +240°C

Master-SIL 1



Silicone-coated glass-fibre fabric Hose for medium and high temperature up to +250°C

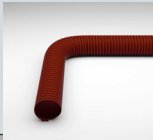
Applications

- chemicals industry
- hot air hose for granulate dryer
- machine and engine manufacturing
- plastic processing industry
- waste incineration plants
- automotive manufacturing

Available sizes:
DN 13 - DN 305

Temperature Range
-70°C to +250°C
peaks -85°C to +300°C

Master-SIL 2



Silicone-coated glass-fibre fabric Hose, for Medium and high temperature up to +250°C two layer

Applications

- chemicals industry
- hot air hose for granulate dryer
- machine and engine manufacturing
- plastic processing industry
- waste incineration plants
- automotive manufacturing

Available sizes:
DN 13 - DN 305

Temperature Range
-70°C to +250°C
peaks -85°C to +300°C

Master-Clip SILICON



Silicone-coated glass-fibre fabric Hose, for medium and high temperature up to +300°C

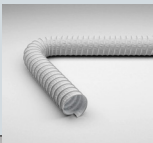
Applications

- engine manufacturing
- hot and cold air conveyance
- machine manufacturing
- automotive manufacturing
- low pressure range
- extractor units
- defence systems
- aircraft manufacturing

Available sizes:
DN 50 - DN 900

Temperature Range
-60°C to +300°C
peaks to +350°C

Master-Clip ISO-SILICON



Silicone-coated glass-fibre fabric Hose for medium and high temperature up to +300°C two layers

Applications

- engine manufacturing
- hot and cold air conveyance
- extractor units with greater suction performance
- machine manufacturing
- automotive manufacturing
- low pressure range
- aircraft manufacturing

Available sizes:
DN 50 - DN 900

Temperature Range
-60°C to +300°C
peaks to +350°C

Carflex 300



Special coated textile high-temperature fabric Hose for exhaust fumes up to +300°C

Applications

- suction of engine exhaust fumes
- all conventional exhaust systems, such as: - Exhaust Hose Reel - Suction Rail System
- light to medium wear during extraction of petrol and diesel engine -fumes from passenger vehicles

Available sizes:
DN 50 - DN 900

Temperature Range
-60°C to +300°C

Master-Clip CAR



Special coated textile high-temperature fabric Hose for exhaust fumes up to +300°C

Applications

- machine manufacturing
- automotive manufacturing
- low pressure range
- exhaust gas extraction (esp. diesel engines)
- hot air
- smoke extractors
- defence systems
- aircraft manufacturing

Available sizes:
DN 50 - DN 900

Temperature Range
-60°C to +300°C
peaks to +350°C

Master-Clip ISO-CAR



Special coated textile high-temperature fabric Hose for exhaust fumes up to +300°C two layers

Applications

- machine manufacturing
- automotive manufacturing
- low pressure range
- exhaust gas extraction (esp. diesel engines)
- hot air
- smoke extractors
- defence systems
- aircraft manufacturing

Available sizes:
DN 50 - DN 900

Temperature Range
-60°C to +300°C
peaks to +350°C

Master-Clip HT 400



Special coated textile high temperature fabric Hose for medium and high temperature hose up to +400°C

Applications

- oven manufacturing
- heat protection
- mining and steel industry
- primarily suitable as suction hose
- limited suitability for exhaust fume extraction
- machine manufacturing
- for vacuum applications

Available sizes:
DN 50 - DN 900

Temperature Range
-20°C to +400°C
peaks to +450°C

Master-Clip HT 450



Special coated textile high temperature fabric Hose, for high temperature hose up to +450°C

Applications

- diesel engine test-benches with higher extraction performance
- engine manufacturing
- exhaust gas extraction
- automotive manufacturing
- low pressure range
- defence systems
- aircraft manufacturing

Available sizes:
DN 50 - DN 900

Temperature Range
-20°C to +450°C
peaks to +500°C

Master-Clip HT 650



Special coated textile high temperature fabric Hose for high temperature up to +650°C

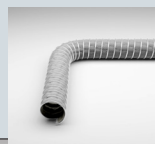
Applications

- exhaust gas extraction for high-performance engine test-benches in the automotive industry
- automotive and aircraft industry
- shipbuilding industry
- mining and steel industry for vacuum applications

Available sizes:
DN 50 - DN 900

Temperature Range
-20°C to +650°C
peaks to +750°C

Master-Clip HT 1100



Special coated textile high temperature fabric Hose for high temperature up to +1100°C

Applications

- exhaust gas extraction for high-performance engine test-benches in the automotive industry
- automotive and aircraft industry
- shipbuilding industry
- mining and steel industry for vacuum applications

Available sizes:
DN 50 - DN 900

Temperature Range
-20°C to +1100°C

Installation & Connections - Clamps

Clip-Grip Hose Clamp screwable



Special clamp for Masterflex hoses

Applications

- special clamp for all hose types from Masterflex products for mobile and stationary units
- left-hand turning spiral for Master-Clip Hose Series
- right-hand turning spiral for Master-PUR Hose series

Available sizes:
DN 40 - DN 920

Hose Clamp with Worm-Gear



Standard clamp for universal requirements

Applications

- mounting of light hose types onto connector brackets on mobile and stationary units

Available sizes:
DN 25 - DN 500

Clip-Grip Quick-Fix Clamp



Special clamp for Masterflex hoses

Applications

- special clamp for all hose types from Masterflex products for mobile and stationary units
- left-hand turning spiral for Master-Clip Hose Series
- right-hand turning spiral for Master-PUR Hose series

Available sizes:
DN 75 - DN 500

Quick-Fix Clamp for Cone Flanges



Standard clamp for universal requirements

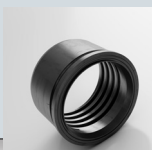
Applications

- for quick connectors from: -Metal columns with cone flanges
- Reductions with cone flanges
- Combiflex PU cone flanges
- Steel piping with cone flanges
- Pipe bends/elbows with cone flanges

Available sizes:
DN 50 - DN 250

Installation & Connections - Plastic Connectors

Combiflex PU Cone Flange



PU Cuff
acc. to DIN 3016

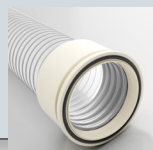
Applications

-screwable quick connection system for the hose types Master-PUR L / H / HX & Performance

Available sizes:
DN 50 - DN 250

Temperature Range
-40°C to +90°C
peaks to +125°C

Combiflex PU Cone Flange Food



PU Cuff in acc. with DIN 3016 Food grade Polyurethane acc. to EU 10/2011

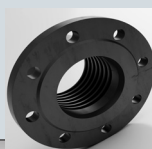
Applications

- Cast-on quick connectors for all Master-PUR Food hose types
- Certified for direct contact with foodstuffs

Available sizes:
DN 50 - DN 200

Temperature Range
-40°C to +90°C
peaks to +125°C

Combiflex PU Fixed Flange



PU Flange for counterflanges acc. to DIN 2632 DIN 2633

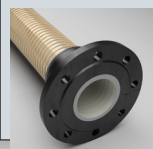
Applications

-screwable plastic flange for the hose types Master-PUR L / H / HX -screwable and cast-on mountings

Available sizes:
DN 50 - DN 300

Temperature Range
-40°C to +90°C
peaks to +125°C

Combiflex Cast-on PU Fixed Flange



PU Flange for counterflanges acc. to DIN 2632 DIN 2633 DIN 2673

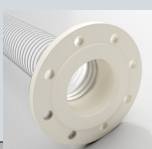
Applications

-cast-on PU flange for all Master-PUR Inline hose types

Available sizes:
DN 50 - DN 200

Temperature Range
-40°C to +90°C
peaks to +125°C

Combiflex PU Fixed Flange Food



PU Fixe Flange for counter-flanges acc. to DIN 2633, Food grade Polyurethane acc. to EU 10/2011

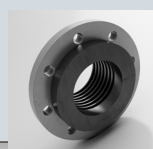
Applications

- Cast-on PU flange for all Master-PUR Food hose types
- Certified for direct contact with foodstuffs

Available sizes:
DN 50 - DN 100

Temperature Range
-40°C to +90°C
peaks to +125°C

Combiflex PU Swivel Flange



PU Flange for counter-flanges acc. to DIN 2632 DIN 2632

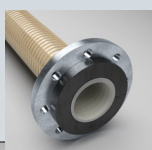
Applications

-screwable plastic collar with loose flange for the hose types Master-PUR L / H / HX

Available sizes:
DN 50 - DN 300

Temperature Range
-40°C to +90°C
peaks to +125°C

Combiflex Cast-on PU Swivel Flange



PU Flange for counter-flanges acc. to DIN 2632 DIN 2632

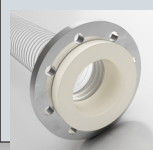
Applications

-cast-on PU swivel flange for Master-PUR series and Inline hose types

Available sizes:
DN 50 - DN 300

Temperature Range
-40°C to +90°C
peaks to +125°C

Combiflex PU Swivel Flange Food



PU Flange for counterflanges acc. to DIN 2633 Food grade Polyurethane acc. to EU 10/2011

Applications

-cast-on plastic flange for all Master-PUR Food hose types

Available sizes:
DN 50 - DN 150

Temperature Range
-40°C to +90°C
peaks to +125°C

Combiflex PU Threaded Sockets



PU Cuff in acc. with DIN ISO 228

Applications

- Screwable threaded connectors for all Master-PUR L, H, HX hose types
- Screwable and cast-on mountings

Available sizes:
DN 50 - DN 150

Temperature Range
-40°C to +90°C
peaks to +125°C

Combiflex PU Threaded Sockets Food



PU Cuff in acc. with DIN ISO 228 Food grade Polyurethane acc. to EU 10/2011

Applications

- Cast-on threaded connectors for all Master-PUR Food hose types
- Certified for direct contact with foodstuffs

Available sizes:
DN 50 - DN 150

Temperature Range
-40°C to +90°C
peaks to +125°C

Combiflex PU Cuff EL



PU End Cuff for Master- PUR Hoses, electro-conductive

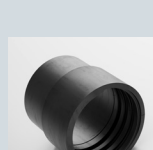
Applications

-Suction and blower units
-Conveyance units
-Industrial vacuum cleaners
-Special screw cuff for Master-PUR L/H and Master-PVC L/H hoses

Available sizes:
DN 32 - DN 100

Temperature Range
-40°C to +90°C
peaks to +125°C

Combiflex PU Cuff



PU End Cuff for Master- PUR Hoses

Applications

-Special screw cuff for all Master-PUR L/H hose types
- Screwable or cast-on mounting

Available sizes:
DN 120 - DN 250

Temperature Range
-40°C to +90°C
peaks to +125°C

Combiflex PU Cuff V



PU End Cuff for Master-PUR Hoses on pipe connection acc. to DIN 2448 DIN 2458

Applications

-screwable special coupling for all Master-PUR L and Master-PUR H hose types
- Screwable or cast-on mounting

Available sizes:
DN 32 - DN 100

Temperature Range
-40°C to +90°C
peaks to +125°C

PU Hose Sleeve



Special sleeve for use with clamp collars

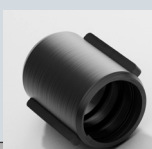
Applications

-reusable special sleeve for connecting spiral hoses from Masterflex SE hose range

Available sizes:
DN 38 - DN 204

Temperature Range
-40°C to +90°C
peaks to +125°C

Combiflex PU Hose Connector



Screwable PU hose connector for Master-PUR Series

Applications

-screwable hose connector for the hose types Master-PUR L / H / HX

Available sizes:
DN 25 - DN 100

Temperature Range
-40°C to +90°C
peaks to +125°C

Cuff for Master-PVC-Flex



Special End Cuff for Master-PVC Flex hoses

Applications

-industrial vacuum cleaners
-suction and blower units
-conveyance units
-special screw cuff for Master-PVC Flex hoses

Available sizes:
DN 25 - DN 102

Temperature Range
-0°C to +70°C

Cuff for Master-VAC



Special End Cuff in PVC for connecting Master-VAC hoses, electroconductive

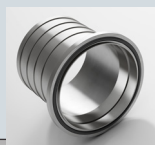
Applications
-industrial vacuum cleaners
-suction and blower units
-conveyance units

Available sizes:
DN 32 - DN 50

Temperature Range
0°C to +70°C

Installation & Connections - Metal Connectors

Cone Flange with Metal Sockets

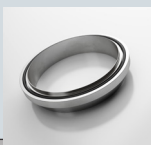


Flange in acc. with DIN 3016

Applications
-for quick connectors from hoses to reductions with cone flanges
-combiflex PU cone flanges
-Steel piping with cone flanges
-pipe bends/elbows with cone flanges

Available sizes:
DN 50 - DN 250

Metal Cone Flange

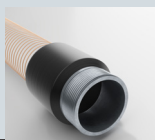


Flange in acc. with DIN 3016

Applications
-machines
-for quick connectors from Combiflex PU cone flange to steel piping

Available sizes:
DN 50 - DN 250

Combiflex Metal Threaded Sockets



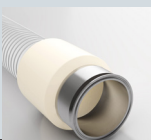
with outer thread acc.to DIN ISO 228 - cast-on

Applications
-for application for connectors to machines and piping
-for mounting of valves for solid, liquid and gaseous media
-Cast-on metal screw connectors with external thread acc. to DIN ISO 228 for all Master-PUR hoses

Available sizes:
DN 25 - DN 150

Temperature Range
-40°C to +90°C
peaks to +125°C

Combiflex Clamp Connection Clamps



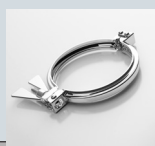
pre-fixed acc.to DIN 32676

Applications
- Fitting for solid, liquid & gaseous media in:
- Food industry
- Pharmaceuticals industry
- Chemicals industry
- Cast-on clamp connector acc. to DIN 32676 for all Master-PUR Food hoses

Available sizes:
DN 25 - DN 150

Temperature Range
-40°C to +90°C
peaks to +125°C

Combiflex Clamp Connection Hinged Clamp



for clamp Connections acc.to DIN 32676

Applications
- Fitting for solid, liquid & gaseous media in:
- Food industry
- Pharmaceuticals industry
- Chemicals industry
- For application for connectors to machines and piping

Available sizes:
DN 32 - DN 150

Combiflex Clamp Ring Seal



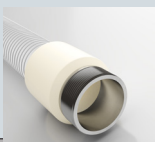
for clamp connections acc.to DIN 32676

Applications
- For application for connectors to machines and piping
- Ring-seal for solid, liquid & gaseous media in:
- Food industry
- Pharmaceuticals industry
- Chemicals industry
- Ring seals for hose brackets with clamp connector acc. to

Available sizes:
DN 32 - DN 150

Temperature Range
-25°C to +120°C
peaks to +150°C

Combiflex VA Threaded Sockets Food



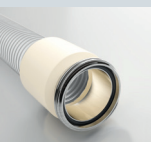
with outer thread, acc.to DIN ISO 228 - cast-on

Applications
-for application for connectors to machines and piping
-for mounting of valves for solid, liquid and gaseous media
-Cast-on VA (stainless steel) screw connectors with external thread acc. to DIN ISO 228 for all Master-PUR-Food hoses
-Pharmaceutical industry

Available sizes:
DN 25 - DN 150

Temperature Range
-40°C to +90°C
peaks to +125°C

Combiflex Dairy Fitting Threaded Hose Sockets



acc.to 11851 - cast-on/pre-fixed

Applications
-Cast-on pipe screw connection acc. to DIN 11851 for Master-PUR Food hoses
-Fitting for solid, liquid and gaseous media in food, pharmaceuticals and chemicals industries

Available sizes:
DN 32 - DN 150

Temperature Range
-40°C to +90°C
peaks to +125°C

Combiflex Dairy Fitting Cone Sockets



with locknut acc.to DIN 11851 - cast-on/pre-fixed

Applications
-Cast-on pipe screw connection acc. to DIN 11851 for Master-PUR Food hoses
-Fitting for solid, liquid and gaseous media in food, pharmaceuticals and chemicals industries

Available sizes:
DN 32 - DN 150

Temperature Range
-40°C to +90°C
peaks to +125°C

Combiflex Dairy Fitting Ring Seal



for threaded sockets acc.to DIN 11851

Applications
-Sealing rings for screw connectors acc. to DIN 11851
-Sealing rings for solid, liquid and gaseous media in food, pharmaceutical and chemicals industries

Available sizes:
DN 32 - DN 150

Temperature Range
-40°C to +90°C
peaks to +125°C

Hose Connector

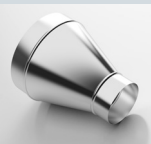


Sheet steel connectors for lightweight and medium-weight hoses

Applications
-Extension, coupling and connection of light to medium weight hoses

Available sizes:
DN 50 - DN 900

Hose Reducer symmetrical



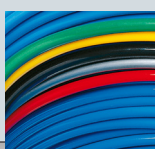
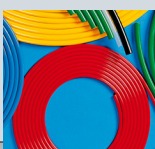
Extension, coupling and connection of light to medium weight hoses

Applications
-Extension, coupling and connection of light to medium weight hoses

Available sizes:
DN 80 - DN 300

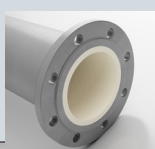
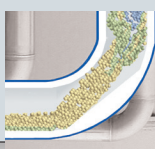
Other products

Pneumatic Tubing



contact us for more info

PU-Lined Pipes & Pipe-Bends



contact us for more info